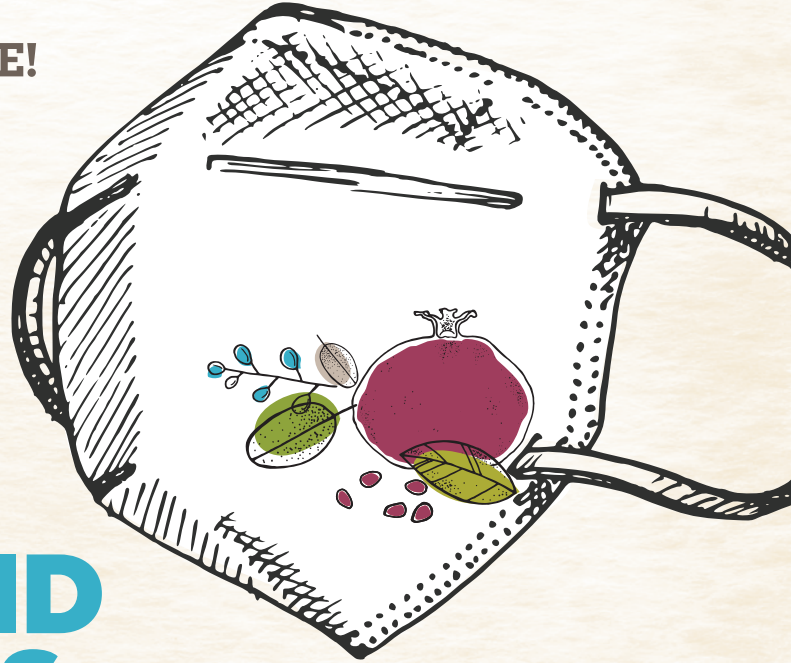


LET'S KEEP
EACH OTHER SAFE!

PROTECT YOURSELF AND OTHERS BY TAKING PROPER COVID PRECAUTIONS



In accordance with our ongoing policy to take all precautions necessary to keep everyone as safe as possible, we are constantly reviewing the COVID guidelines and CDC recommendations and have updated COVID protocols at Temple Beth El

MASKS: Are strongly recommended and may be required depending on infection rates. This policy is in place in order to protect the greater community, particularly those not yet vaccinated and those who are at high risk.

VACCINATIONS: We strongly encourage vaccinations and keeping up-to-date with boosters as recommended by the CDC.

GENERAL: If you or anyone in your household is exhibiting any symptoms, please stay home.

With these guidelines in place, we are hopeful it will continue to be safe to welcome you to Temple Beth El for daily, weekly Shabbat and High Holy Day services and programming.

**PLEASE CHECK OUR WEBSITE
FOR ONGOING COVID PROTOCOLS AND UPDATES:
www.tberochester.org/covid-19/**